

**Subject:** How To Remove A Cover – SOLARIS®

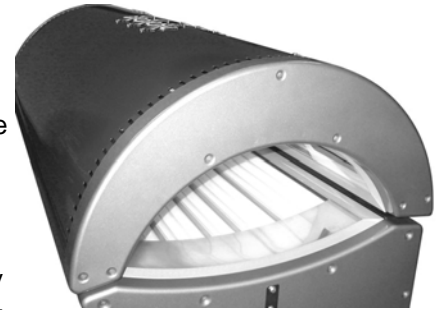
**Number:** SRV0023

**Applicability:** SOLARIS 36, 42, 336, 442, 542  
StarPower 52, 548  
SolarSystem 42 VIP  
SolarSystem 52 Platinum

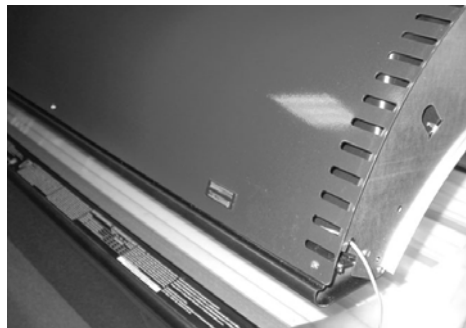
**Date:** 4/10/2006

**Overview:** This procedure covers many models, but all have the same basic cover design. Proceed carefully and avoid pulling any wiring. **Always disconnect power before removing any protective covers.**

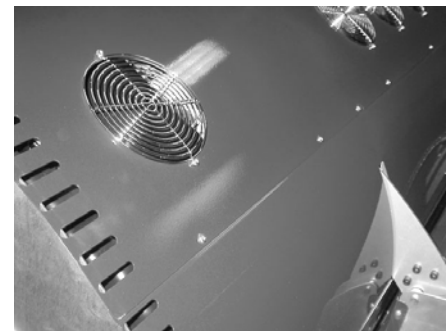
- Procedure:**
1. Along the front edge of the cover is a long, metal trim piece held in place by magnets. Flip this trim piece downward and flex slightly to remove its tabs from the endcaps.
  2. The StarPower 548 and SolarSystem 52 Platinum also have a metal trim piece along the back edge, held in place by screws. Remove this trim piece.
  3. The plastic endcaps on each end are held in place with 7 screws each. When removing the endcaps, keep in mind the head-end endcap contains the timer display. Disconnect the wire from the display as the endcap is removed.
  4. Along the front of the cover are four screws. Remove these.
  5. Along the back of the cover (The 36, 42, 336, 442, and 542 have a front and rear cover. Only remove the front one.) are more screws. Remove these and the cover can be lifted off. **NOTE: the canopy will rise due to the decreased weight.**
  6. Installation of the cover is just the reversal of the above directions. Remember to plug the timer display cable into the timer display before installing the head-end endcap.



ENCAP SCREWS



SCREWS ON FRONT OF COVER



SCREWS ON BACK OF COVER

**NOTICE:** This document and the information disclosed herein are proprietary data of ETS, Inc. Neither this document nor the information contained herein shall be used, reproduced, or disclosed to others without the written authorization of ETS, Inc. except to the extent required for installation or maintenance of the recipient's equipment.

**CAUTION:** ETS, Inc. Service Bulletins are intended for use by experienced service technicians. They are written to inform those technicians of conditions that may occur in some equipment, or to provide information that could assist in the proper servicing of the equipment. If a condition is described, DO NOT assume that this service bulletin must be applied to your equipment, or that your equipment will develop that condition. Always consult your ETS, Inc. Technical Service Representative before performing any modifications to your equipment. When electrical service is needed, we recommend hiring a professional electrician.