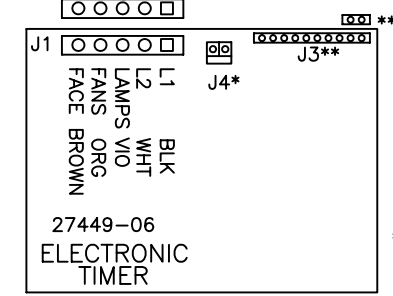
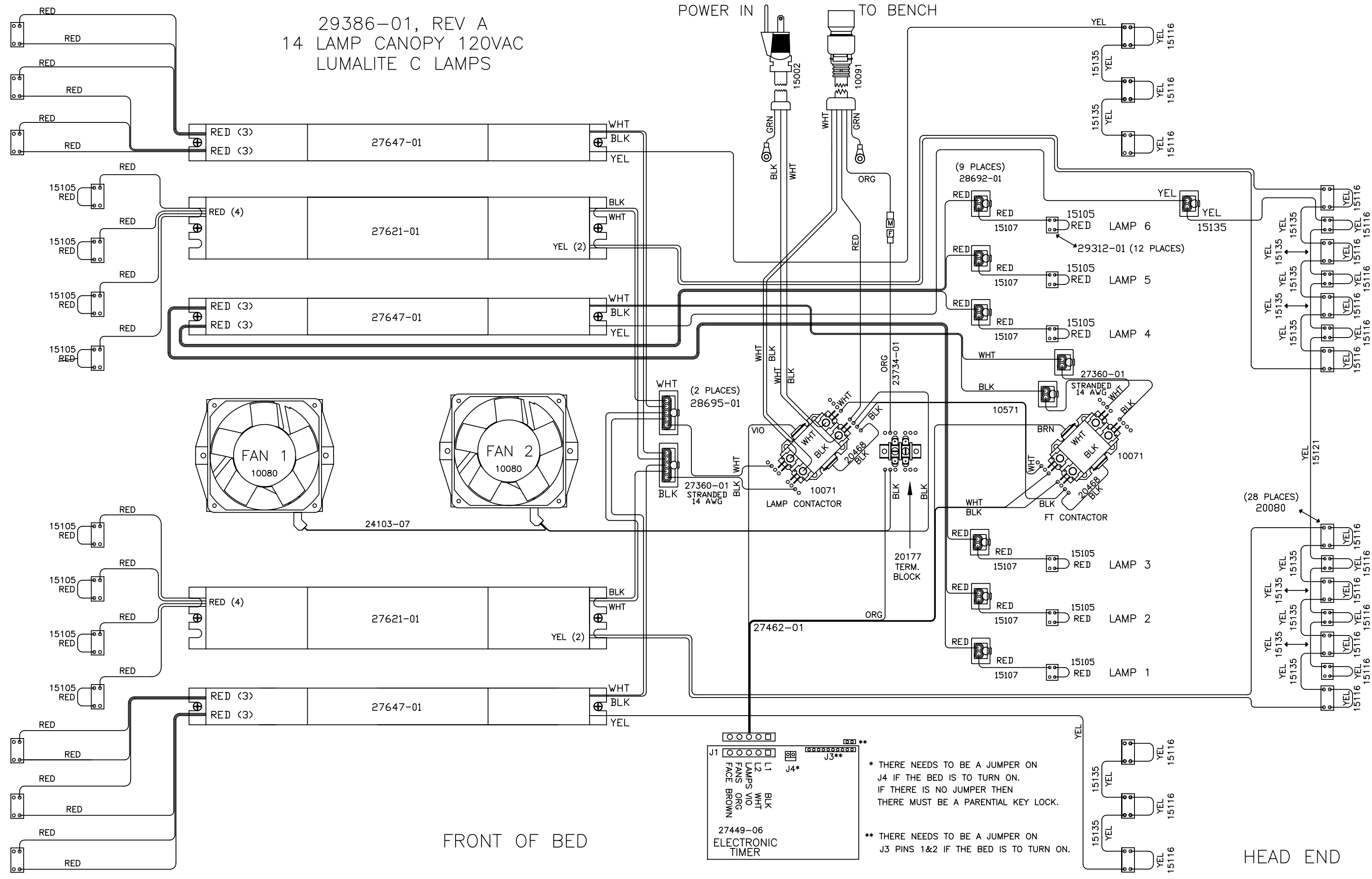


29386-01, REV A
14 LAMP CANOPY 120VAC
LUMALITE C LAMPS

POWER IN TO BENCH



* THERE NEEDS TO BE A JUMPER ON J4 IF THE BED IS TO TURN ON. IF THERE IS NO JUMPER THEN THERE MUST BE A PARENTIAL KEY LOCK.

** THERE NEEDS TO BE A JUMPER ON J3 PINS 1&2 IF THE BED IS TO TURN ON.

FRONT OF BED

HEAD END

29387-01, REV A
12 LAMP BENCH 120 VAC

