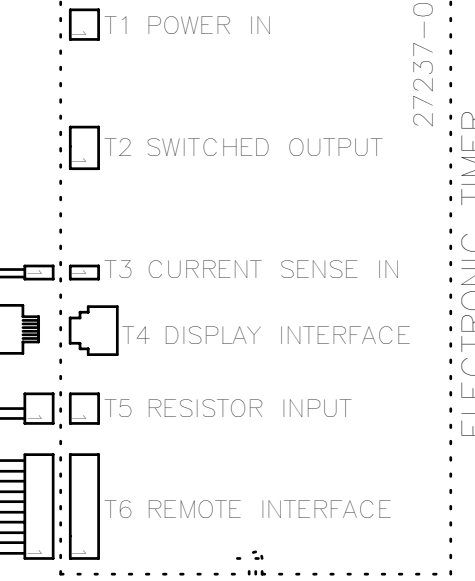
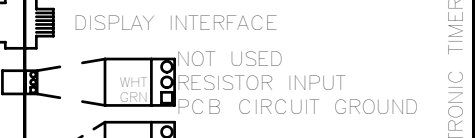
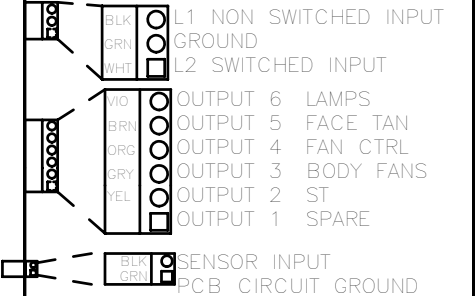
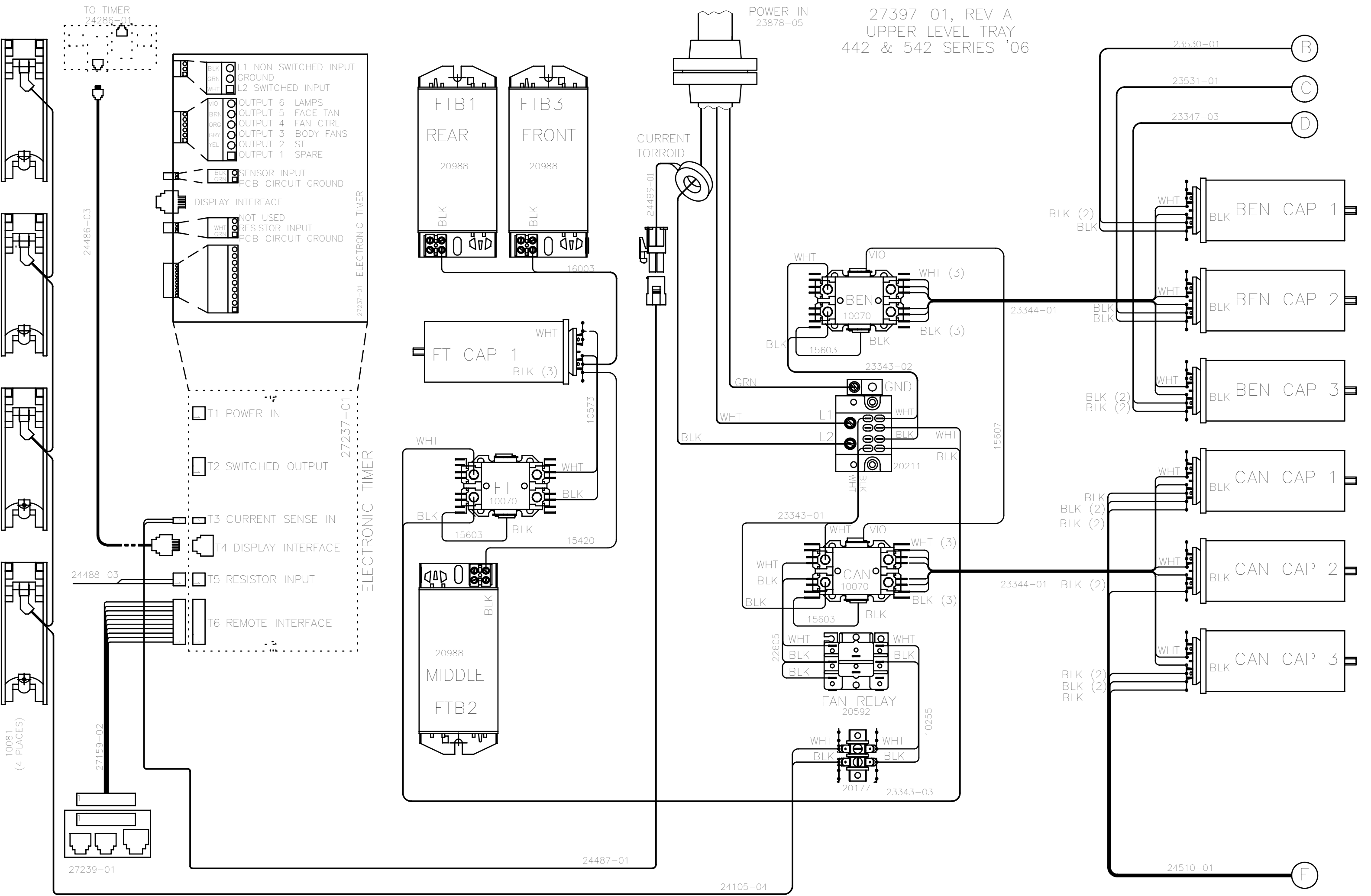


27397-01, REV A
UPPER LEVEL TRAY
442 & 542 SERIES '06

POWER IN
23878-05

CURRENT
TORROID

TO TIMER
24286-01



10081
(4 PLACES)

27239-01

24487-01

24105-04

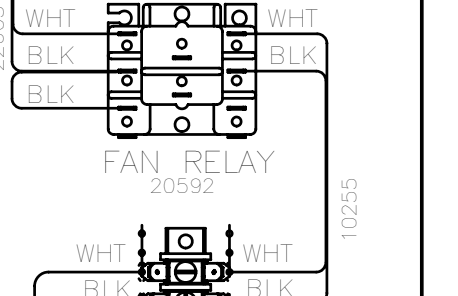
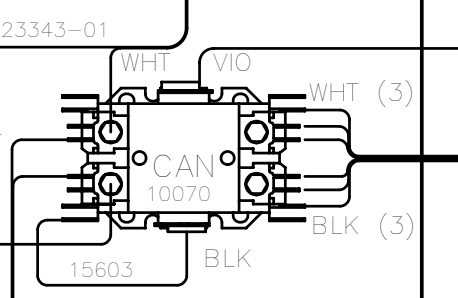
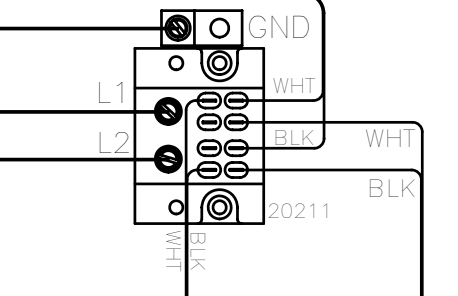
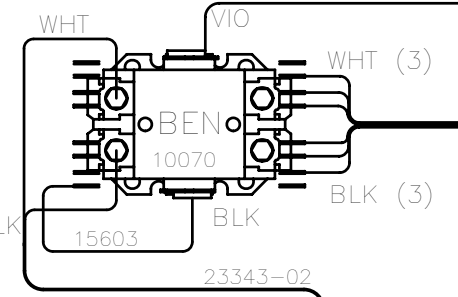
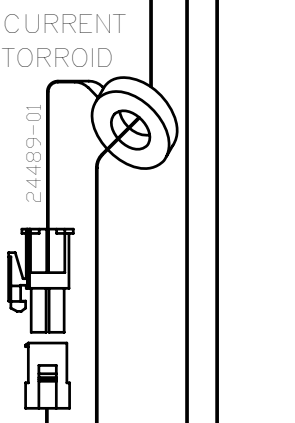
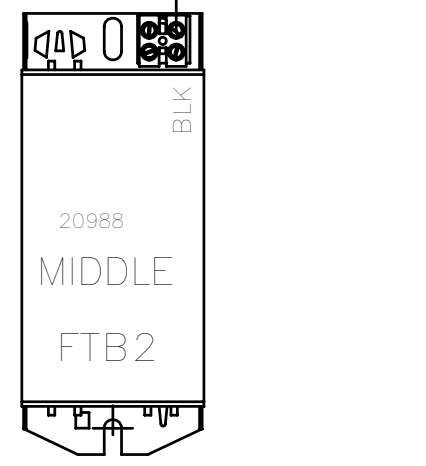
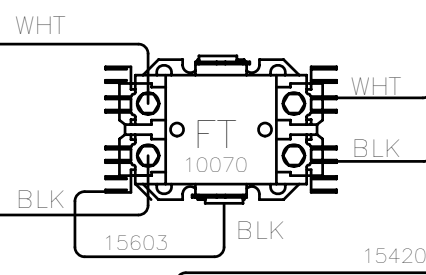
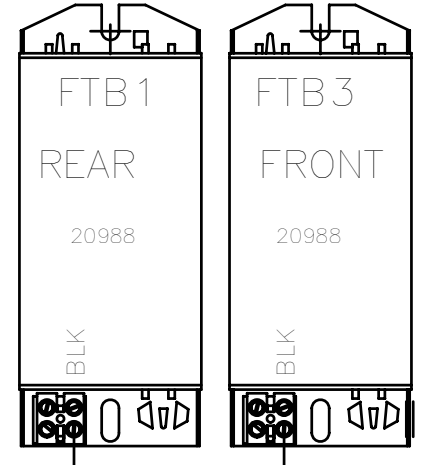
24510-01

F

B

C

D



BLK (2)
BLK

BLK
BLK

BLK (2)
BLK (2)

BLK
BLK (2)
BLK (2)

BLK (2)
BLK (2)

BLK (2)
BLK
BLK

23530-01

23531-01

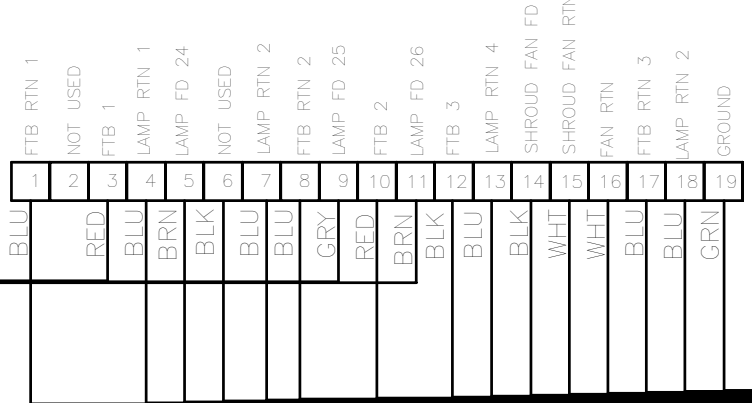
23347-03

23344-01

23344-01

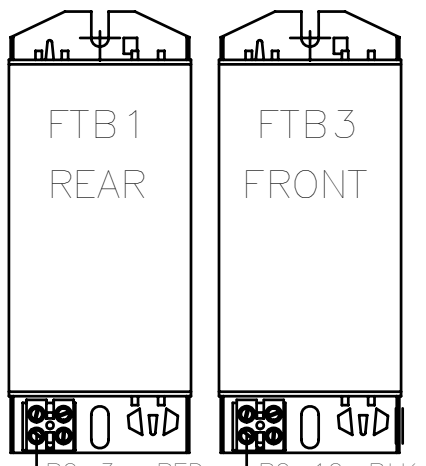
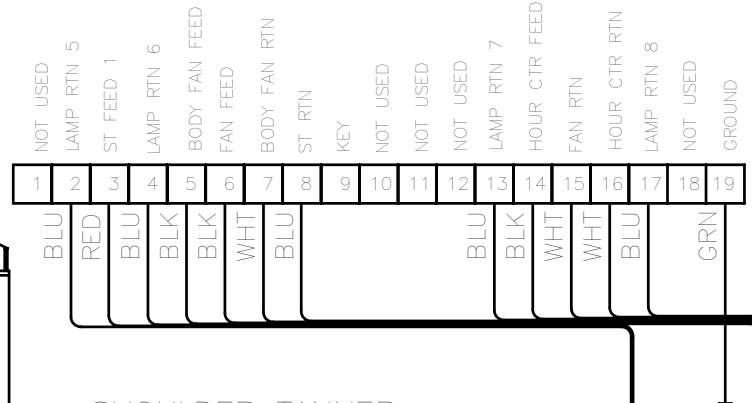
24510-01

P2
23198-01

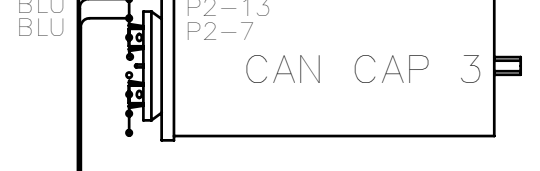
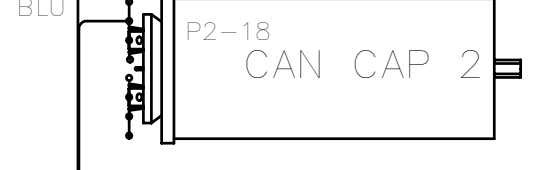
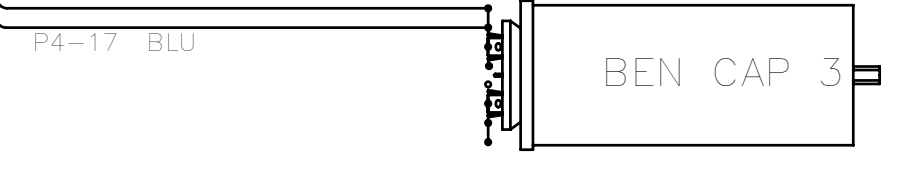
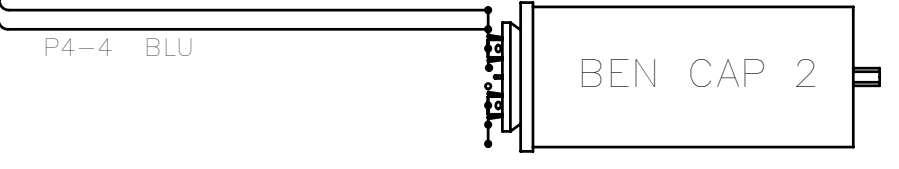
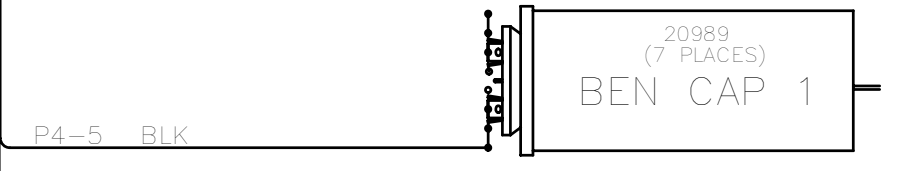
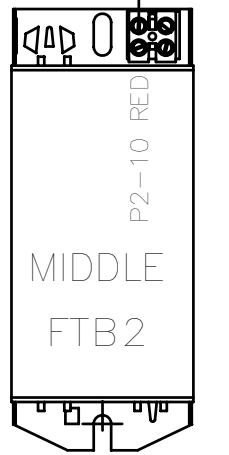
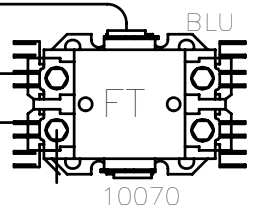
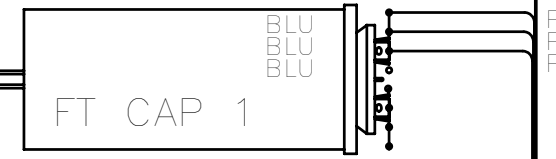
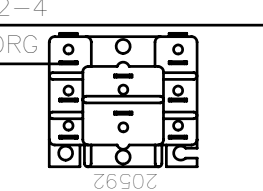
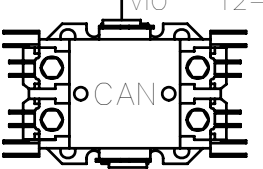
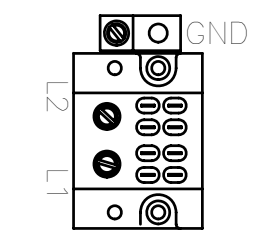
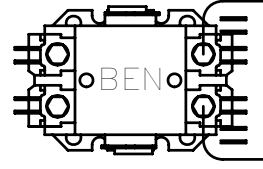
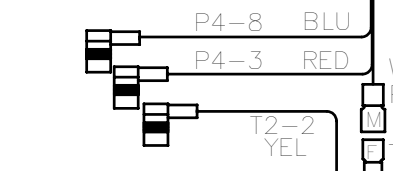


28968-01, REV A
UPPER LEVEL TRAY
42 VIP SERIES '06

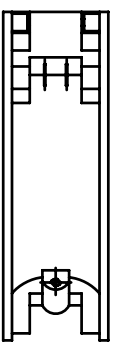
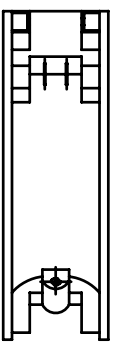
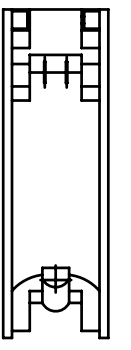
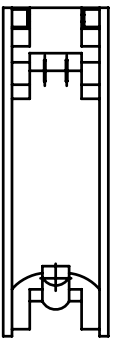
P4
23197-01



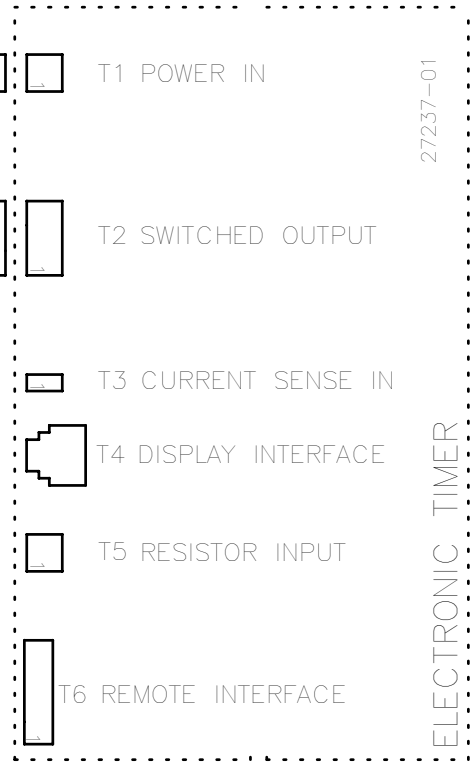
SHOULDER TANNER
(ST) RELAY



TO BALLAST
24 - 26



FRAME GROUND

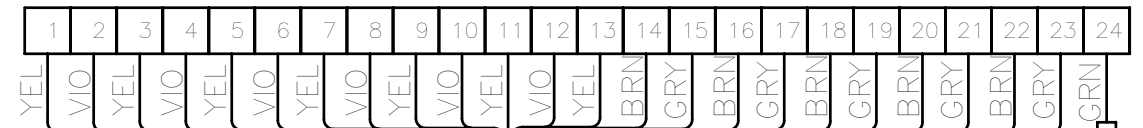


24873-01

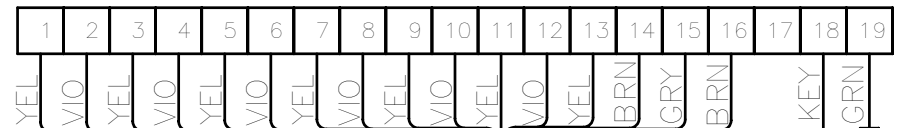
23335-01

WARNING: ALTERING THE DESIGN, TIMER SYSTEM, OR WIRING FROM THAT SHOWN HEREIN, WILL VOID THE WARRANTY, AND MAY RESULT IN A VIOLATION OF FEDERAL LAW.

P1
23196-01



P3
23195-01



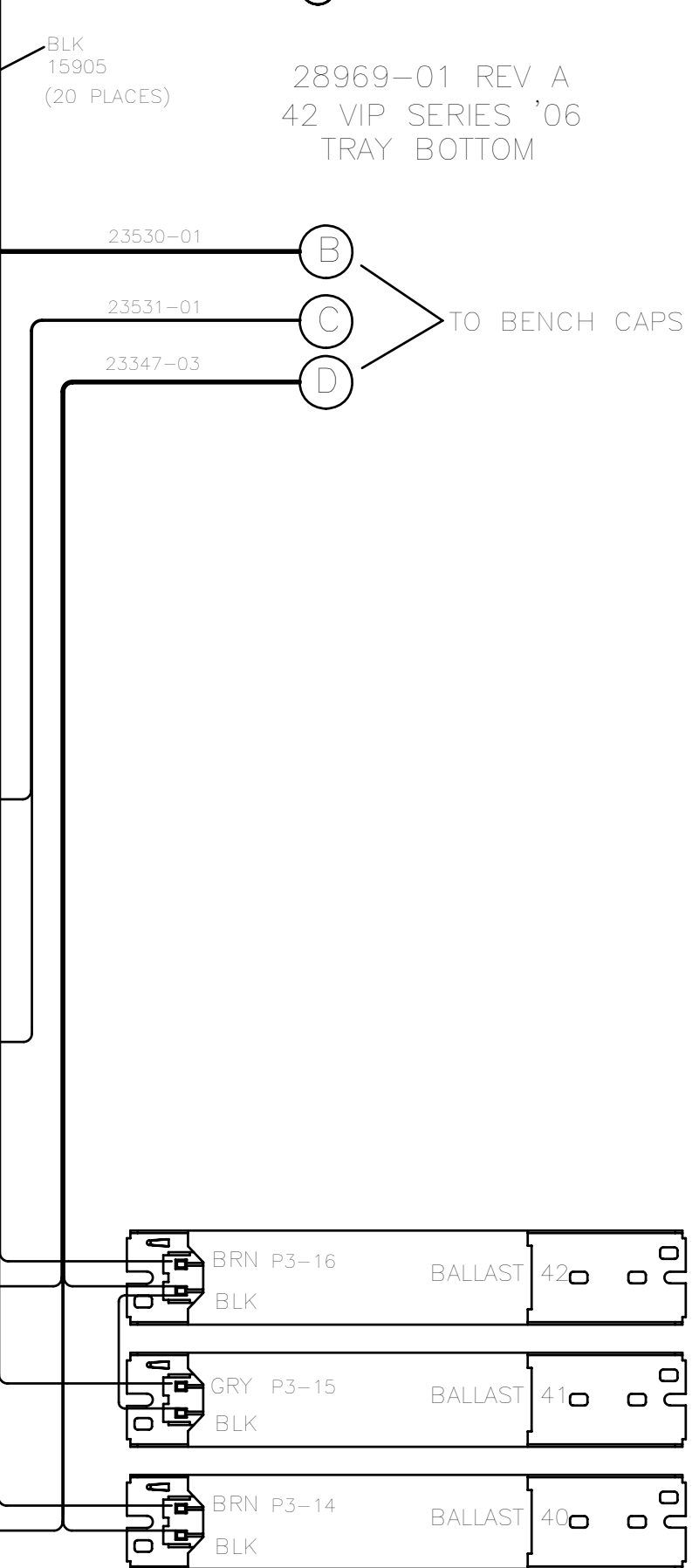
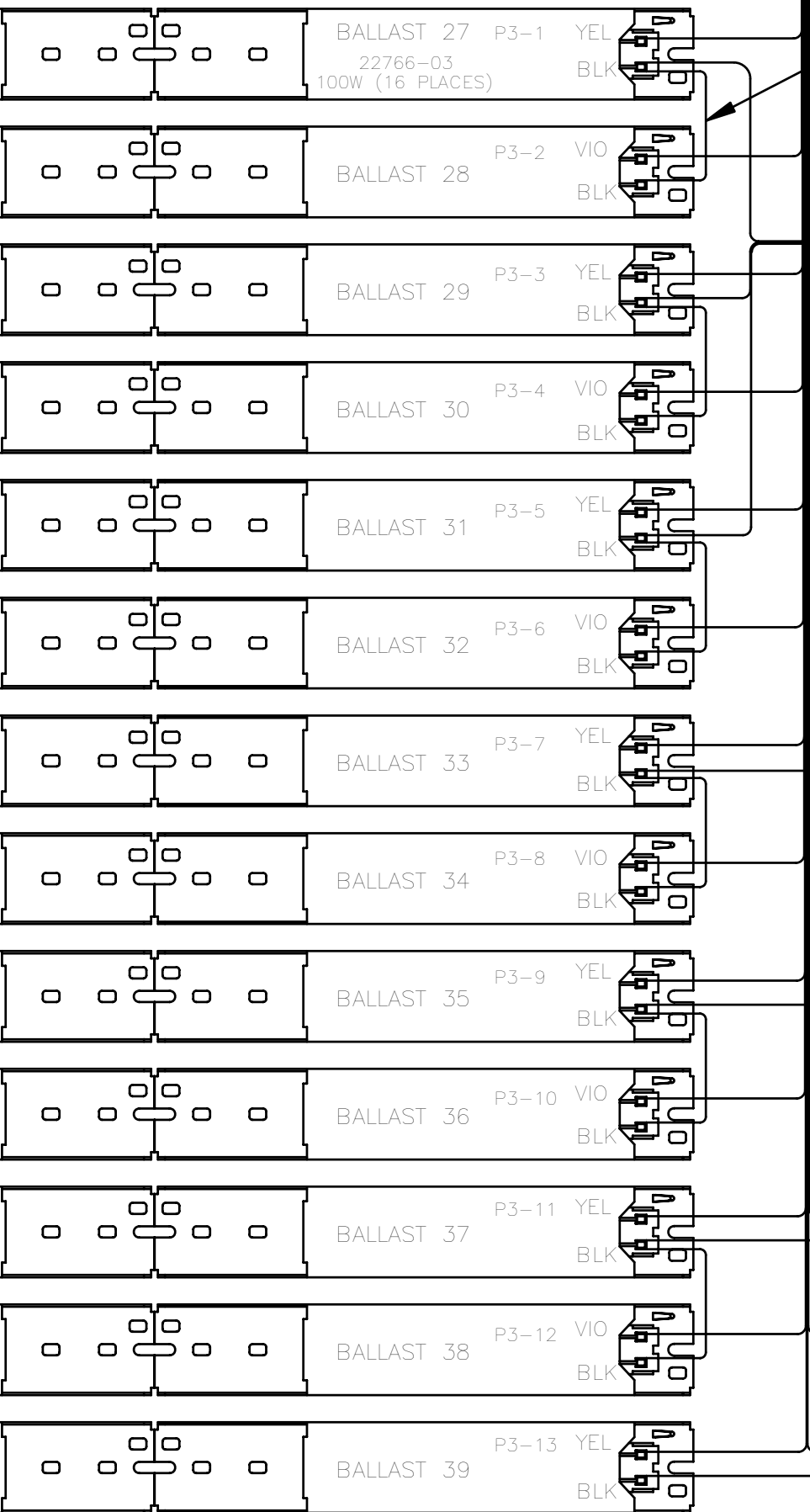
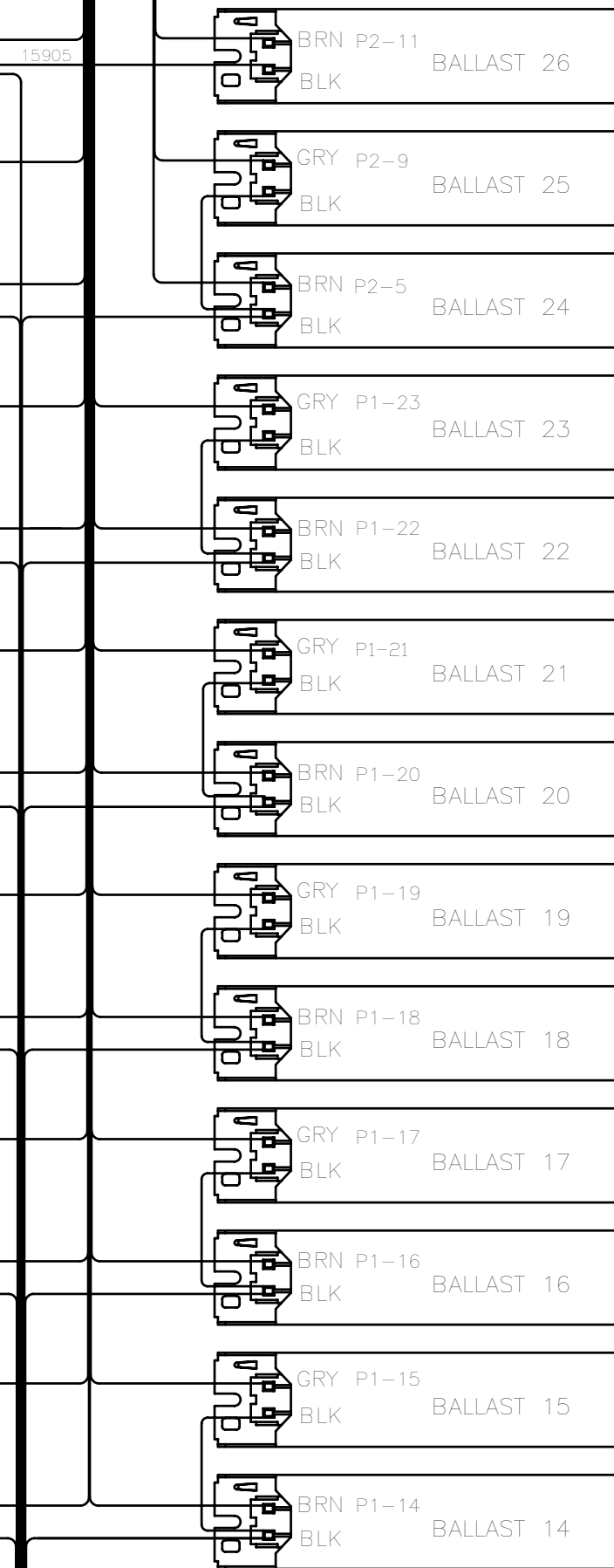
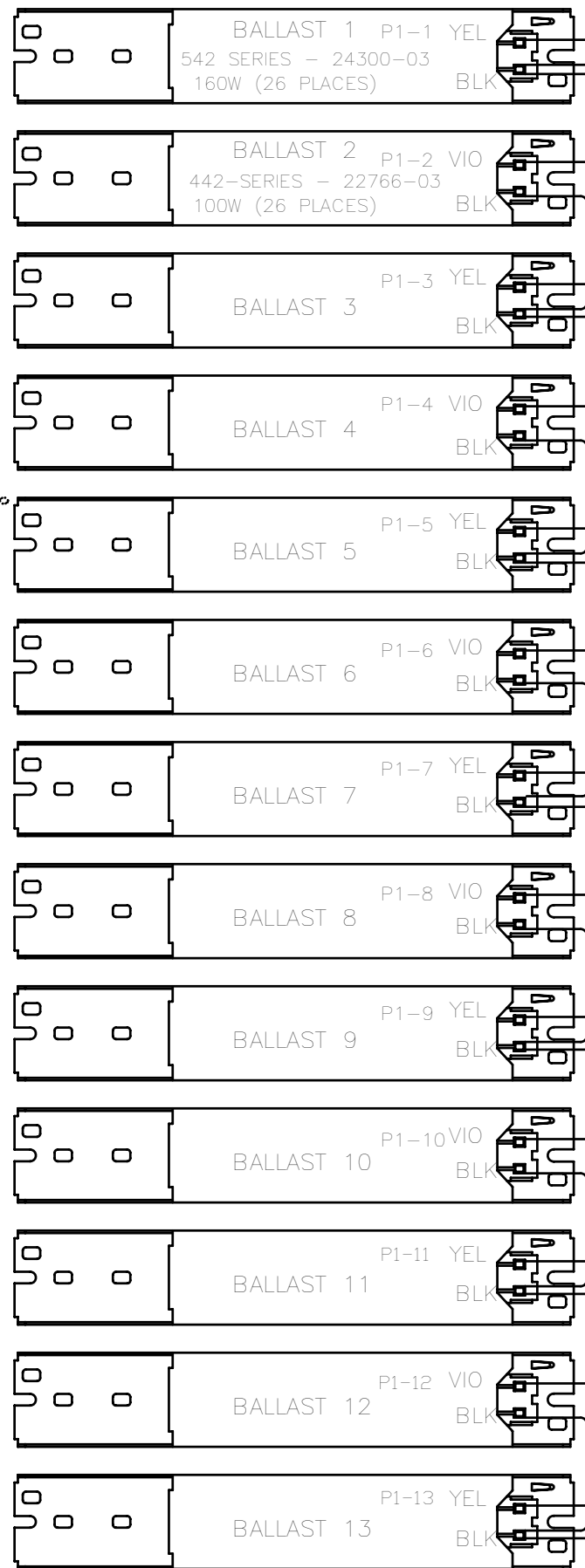
TO P2



23198-01

FRAME GROUND

FRAME GROUND



BLK
15905
(20 PLACES)

28969-01 REV A
42 VIP SERIES '06
TRAY BOTTOM

23530-01

23531-01

23347-03



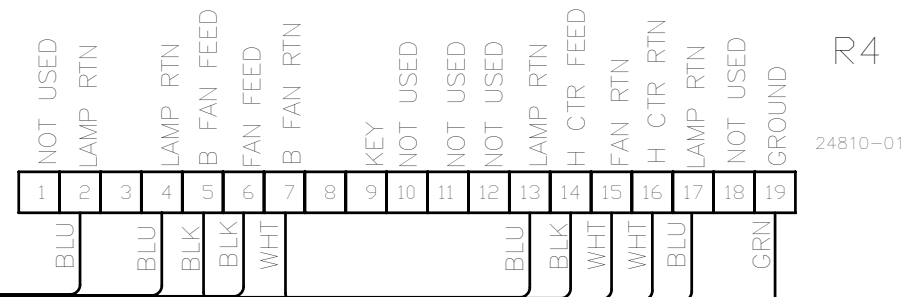
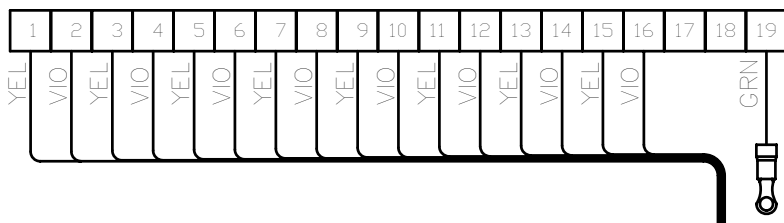
TO BENCH CAPS

24510-01

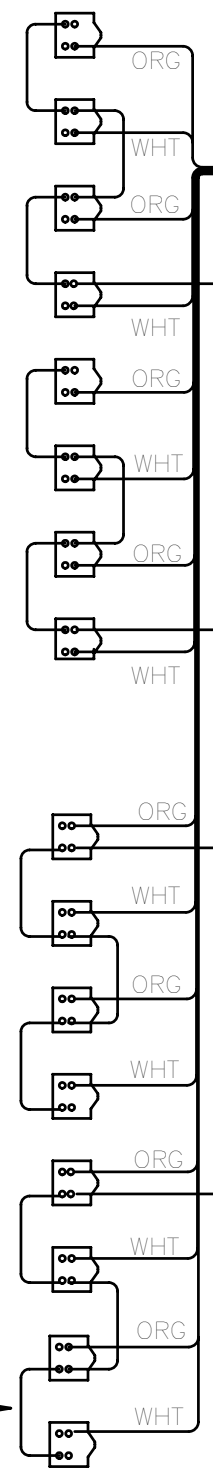


TO CANOPY CAPS

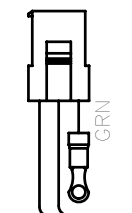
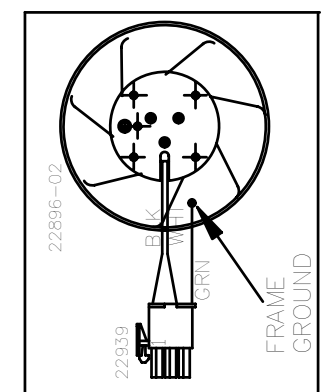
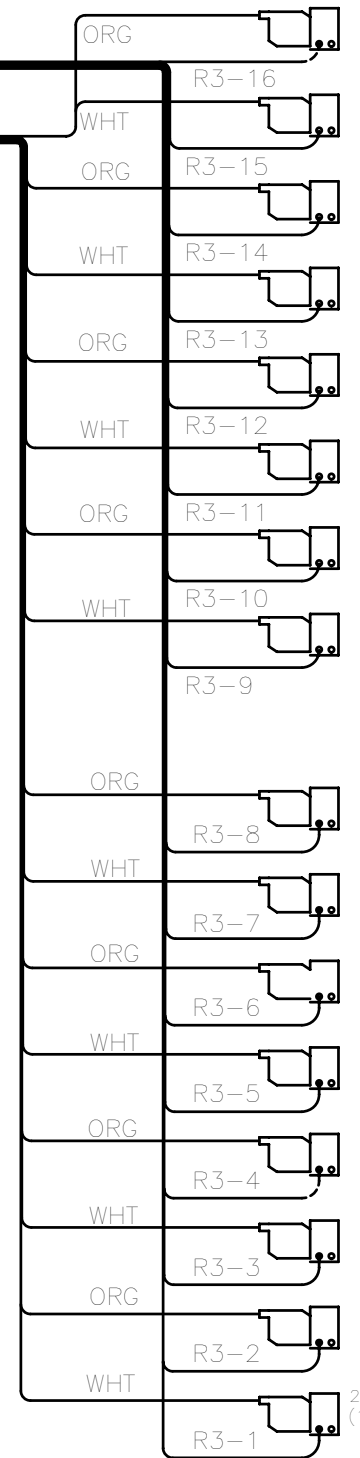
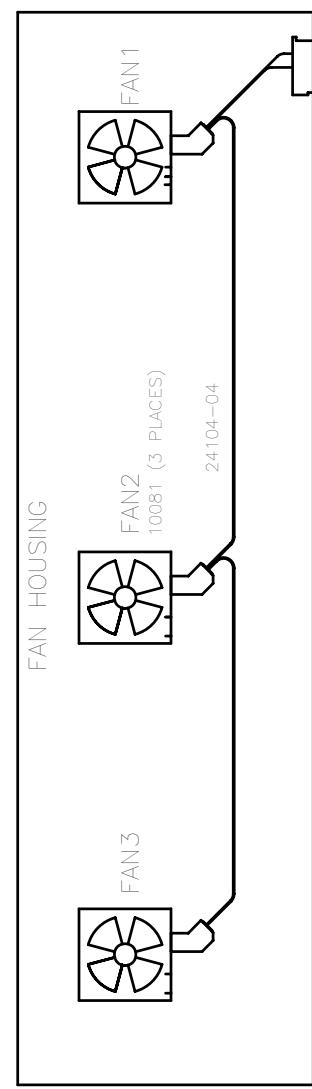
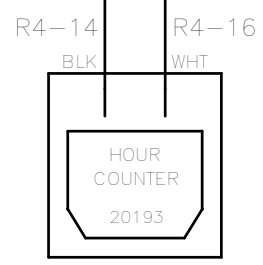
R3
23348-01



R4
24810-01



R4-2
R4-4
R4-13
R4-17



28969-01 REV A
42 VIP SERIES '06
BENCH

STARTER
20944
(16 PLACES)

20081
(16 PLACES)

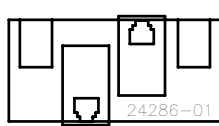
15913
BRN
12 PLACES

20080
(16 PLACES)

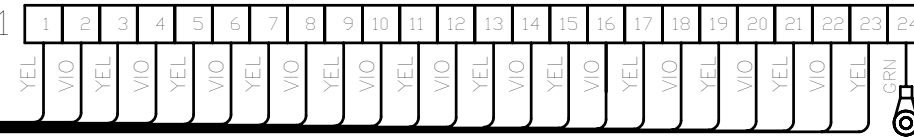
FRONT OF BED
(BOTTOM SIDE UP)

WARNING: ALTERING THE DESIGN, TIMER SYSTEM, OR WIRING FROM THAT SHOWN HEREIN, WILL VOID THE WARRANTY, AND MAY RESULT IN A VIOLATION OF FEDERAL LAW.

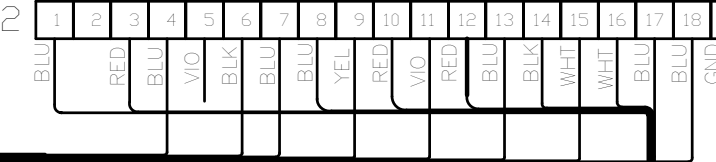
TO TIMER
VIA RJ-11
CABLE



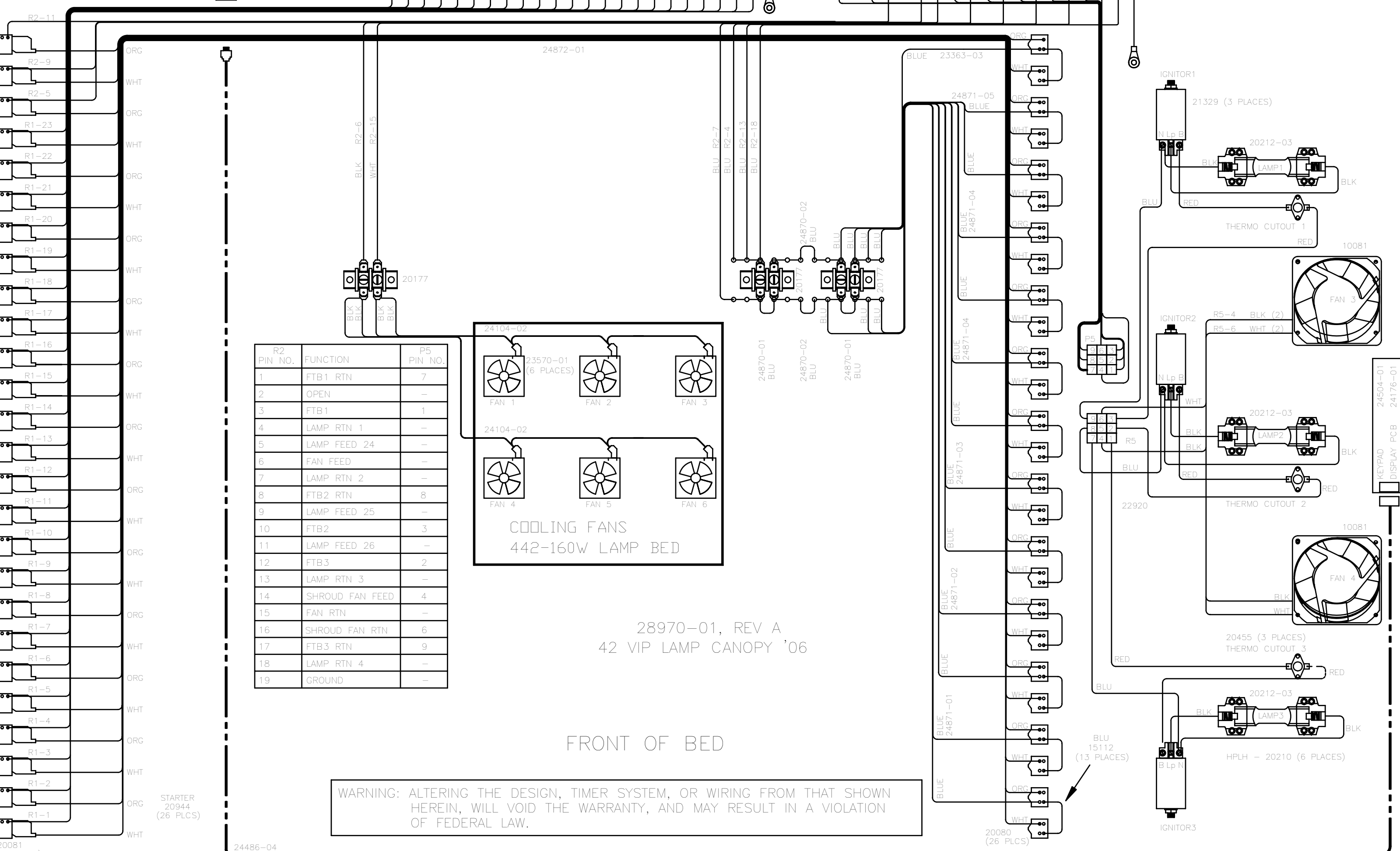
R1
23361-01



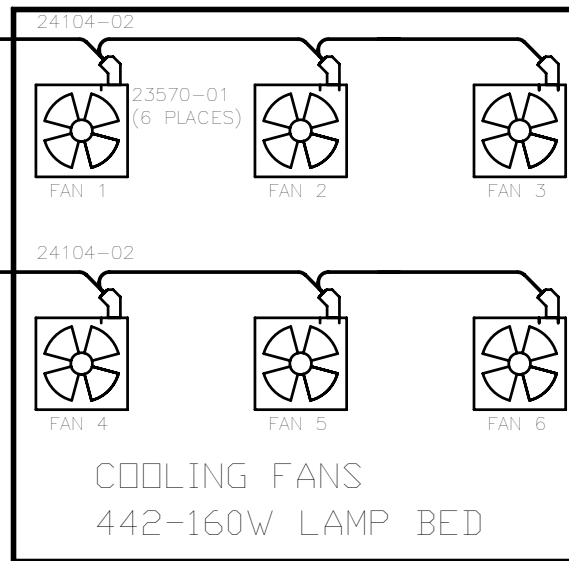
R2



23571-01



R2 PIN NO.	FUNCTION	P5 PIN NO.
1	FTB1 RTN	7
2	OPEN	-
3	FTB1	1
4	LAMP RTN 1	-
5	LAMP FEED 24	-
6	FAN FEED	-
7	LAMP RTN 2	-
8	FTB2 RTN	8
9	LAMP FEED 25	-
10	FTB2	3
11	LAMP FEED 26	-
12	FTB3	2
13	LAMP RTN 3	-
14	SHROUD FAN FEED	4
15	FAN RTN	-
16	SHROUD FAN RTN	6
17	FTB3 RTN	9
18	LAMP RTN 4	-
19	GROUND	-



28970-01, REV A
42 VIP LAMP CANOPY '06

FRONT OF BED

WARNING: ALTERING THE DESIGN, TIMER SYSTEM, OR WIRING FROM THAT SHOWN HEREIN, WILL VOID THE WARRANTY, AND MAY RESULT IN A VIOLATION OF FEDERAL LAW.

STARTER
20944
(26 PLCS)

24486-04

20080
(26 PLCS)

BLU
15112
(13 PLACES)

24504-01
24176-01
KEYPAD
DISPLAY PCB