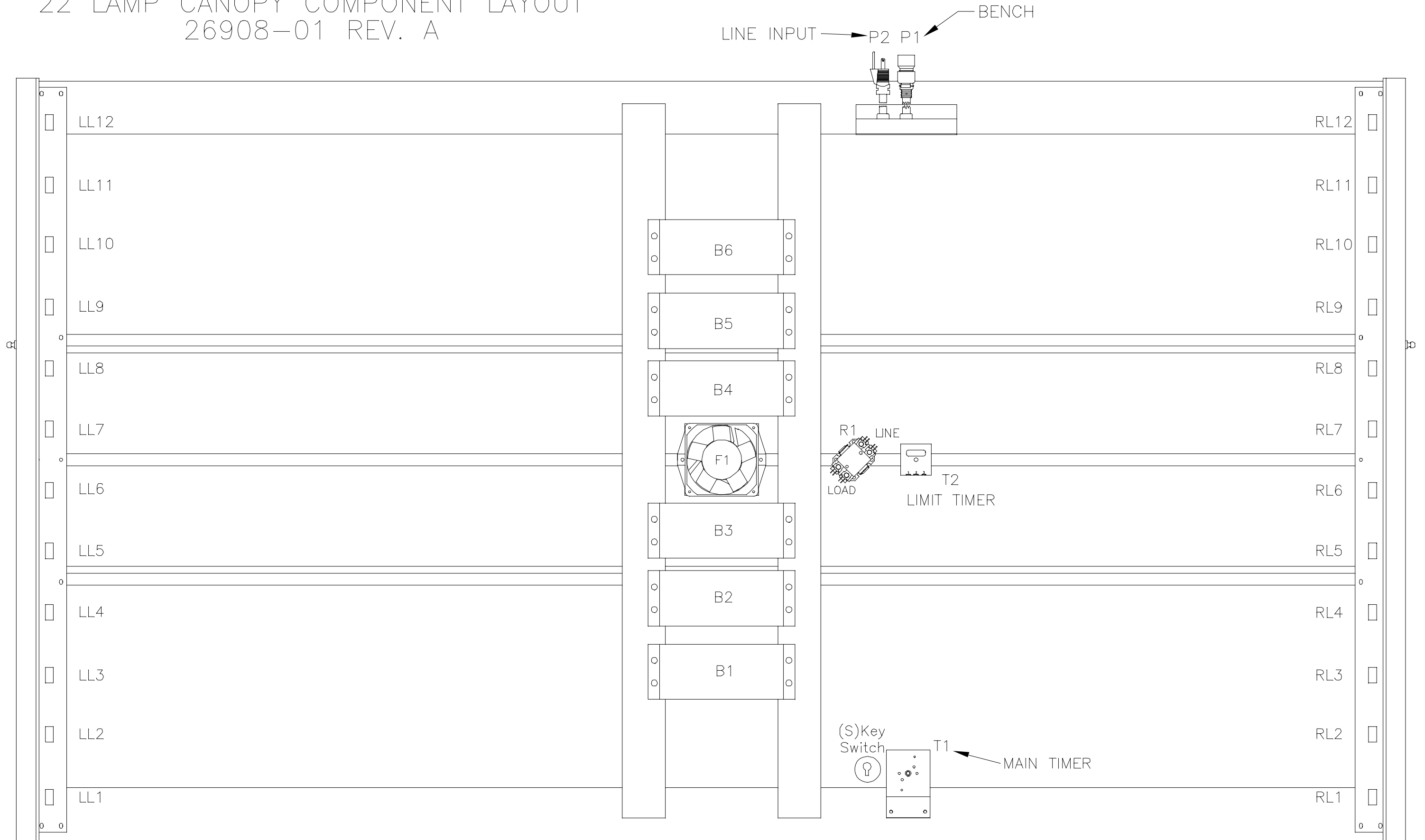


# 22 LAMP CANOPY COMPONENT LAYOUT

## 26908-01 REV. A



LL = LEFT LAMPHOLDER  
 F = FAN  
 R = RELAY (CONTACTOR)  
 S = KEY SWITCH

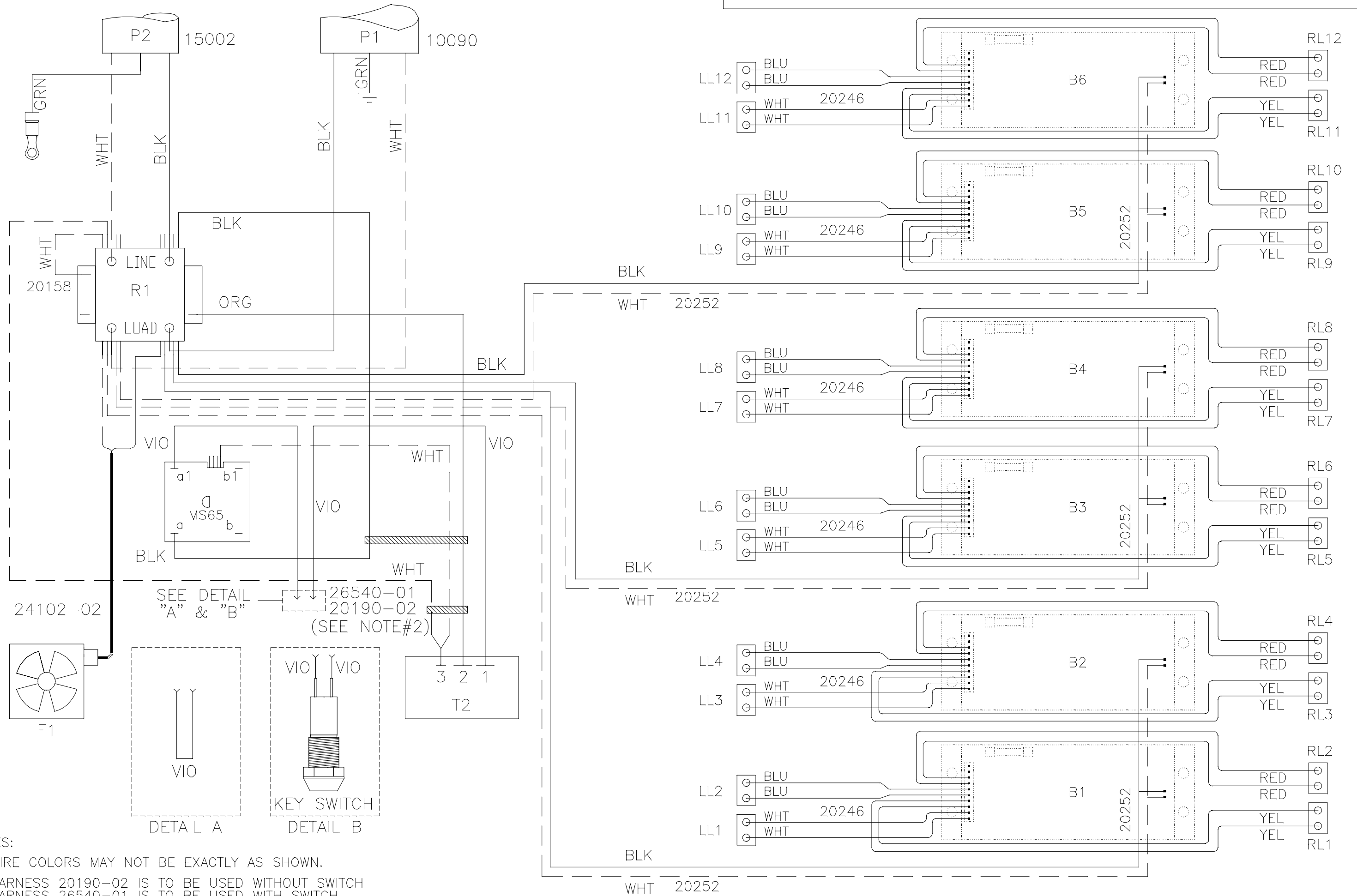
RL = RIGHT LAMPHOLDER  
 P = POWER  
 T = TIMER

NOTE 1. KEY SWITCH IS NOT USED ON ALL MODELS.

# 22 LAMP CANOPY WIRE DIAGRAM

## 26908-01, REV A

WARNING: ALTERING THE DESIGN, TIMER SYSTEM, OR WIRING FROM THAT SHOWN HEREIN, WILL VOID THE WARRANTY, AND MAY RESULT IN A VIOLATION OF FEDERAL LAW.

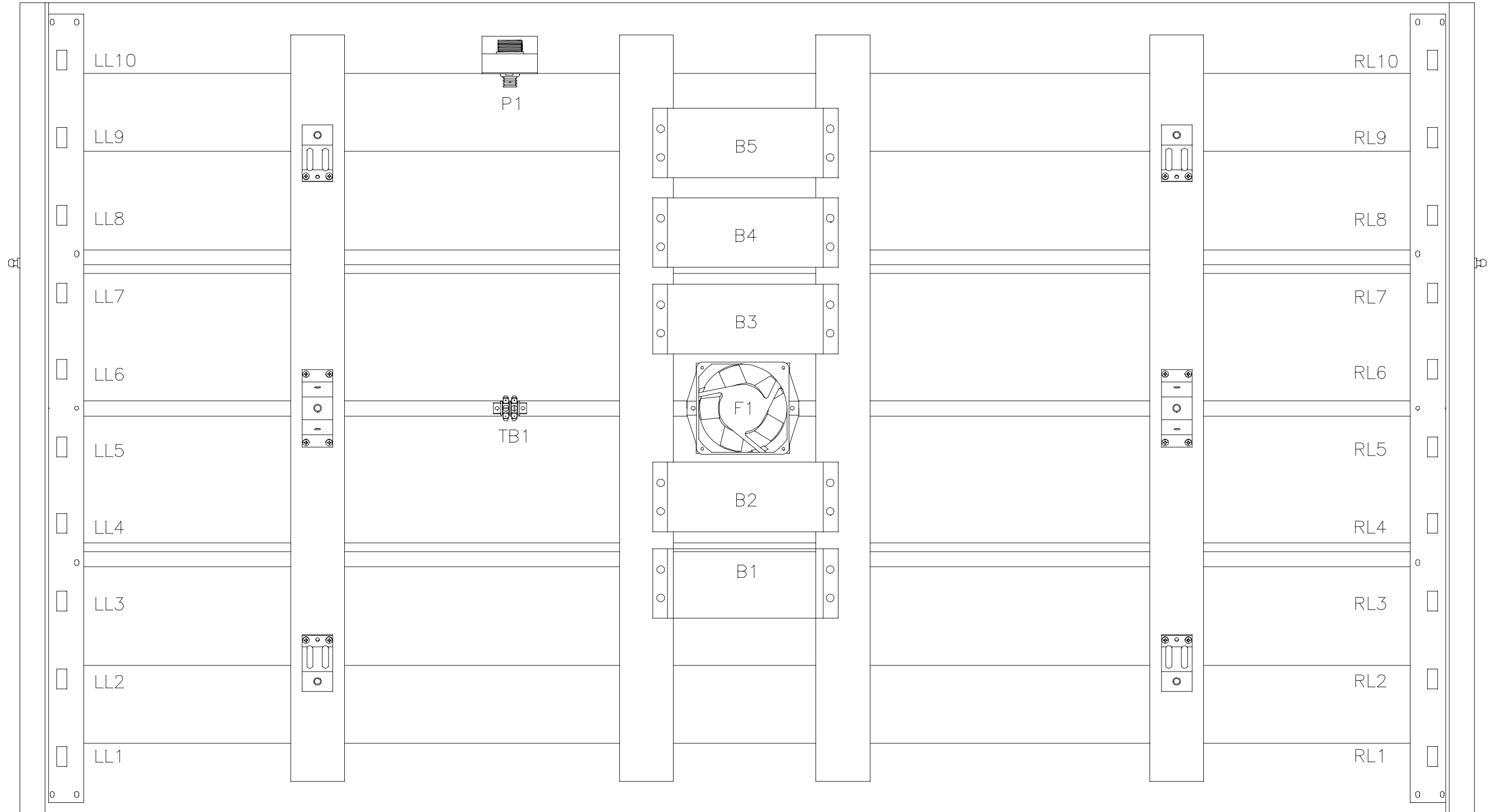


### NOTES:

1. WIRE COLORS MAY NOT BE EXACTLY AS SHOWN.
2. HARNESS 20190-02 IS TO BE USED WITHOUT SWITCH  
HARNESS 26540-01 IS TO BE USED WITH SWITCH

# 22 LAMP BENCH COMPONENT LAYOUT

## 26909-01, REV A



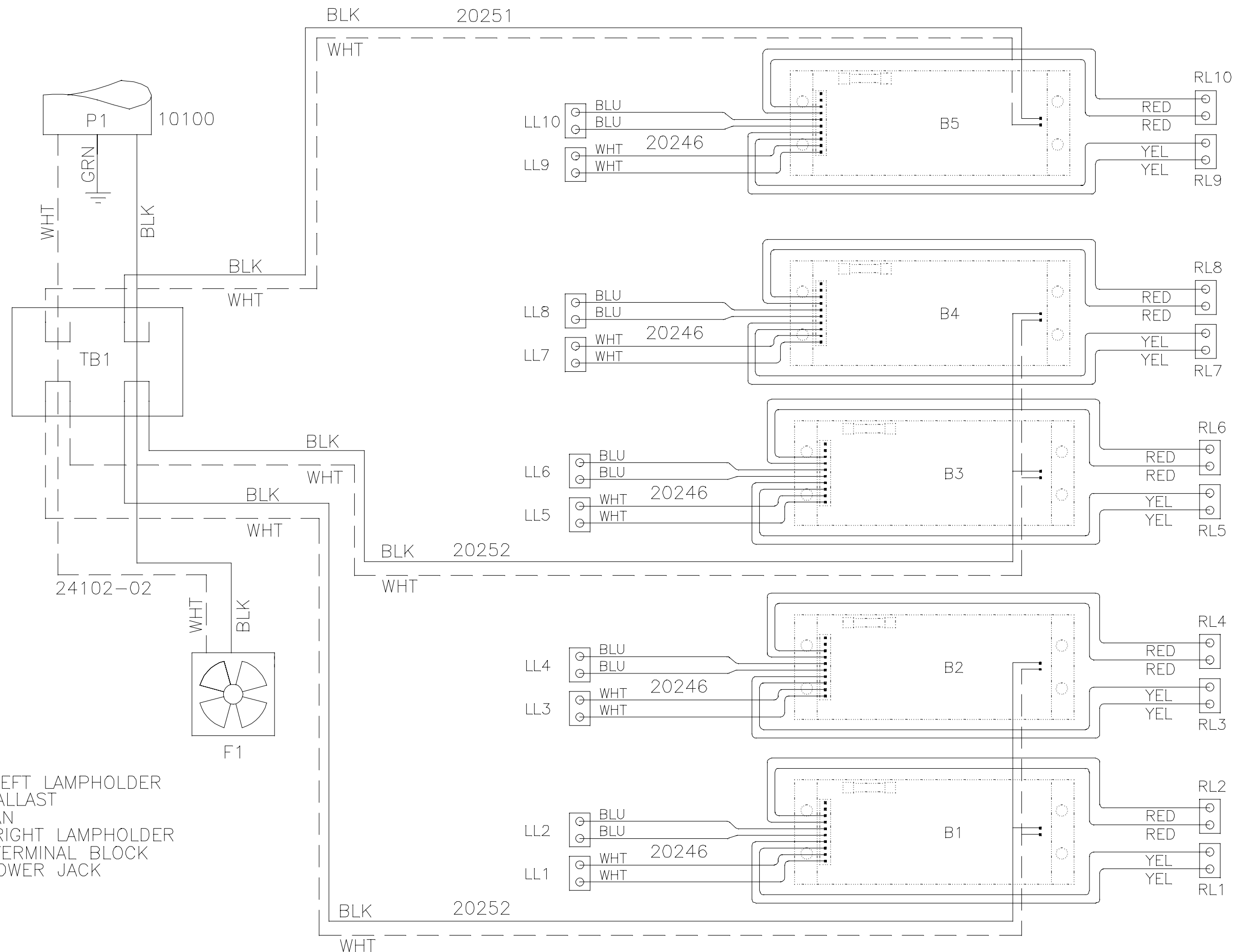
LL = LEFT LAMPHOLDER  
 B = BALLAST  
 F = FAN

RL = RIGHT LAMPHOLDER  
 TB = TERMINAL BLOCK  
 P = POWER JACK

FRONT OF BED

22 LAMP BENCH WIRE DIAGRAM  
26909-01, REV A

WARNING: ALTERING THE DESIGN, TIMER SYSTEM, OR WIRING FROM THAT SHOWN HEREIN, WILL VOID THE WARRANTY, AND MAY RESULT IN A VIOLATION OF FEDERAL LAW.



LL = LEFT LAMPHOLDER  
B = BALLAST  
F = FAN  
RL = RIGHT LAMPHOLDER  
TB = TERMINAL BLOCK  
P = POWER JACK