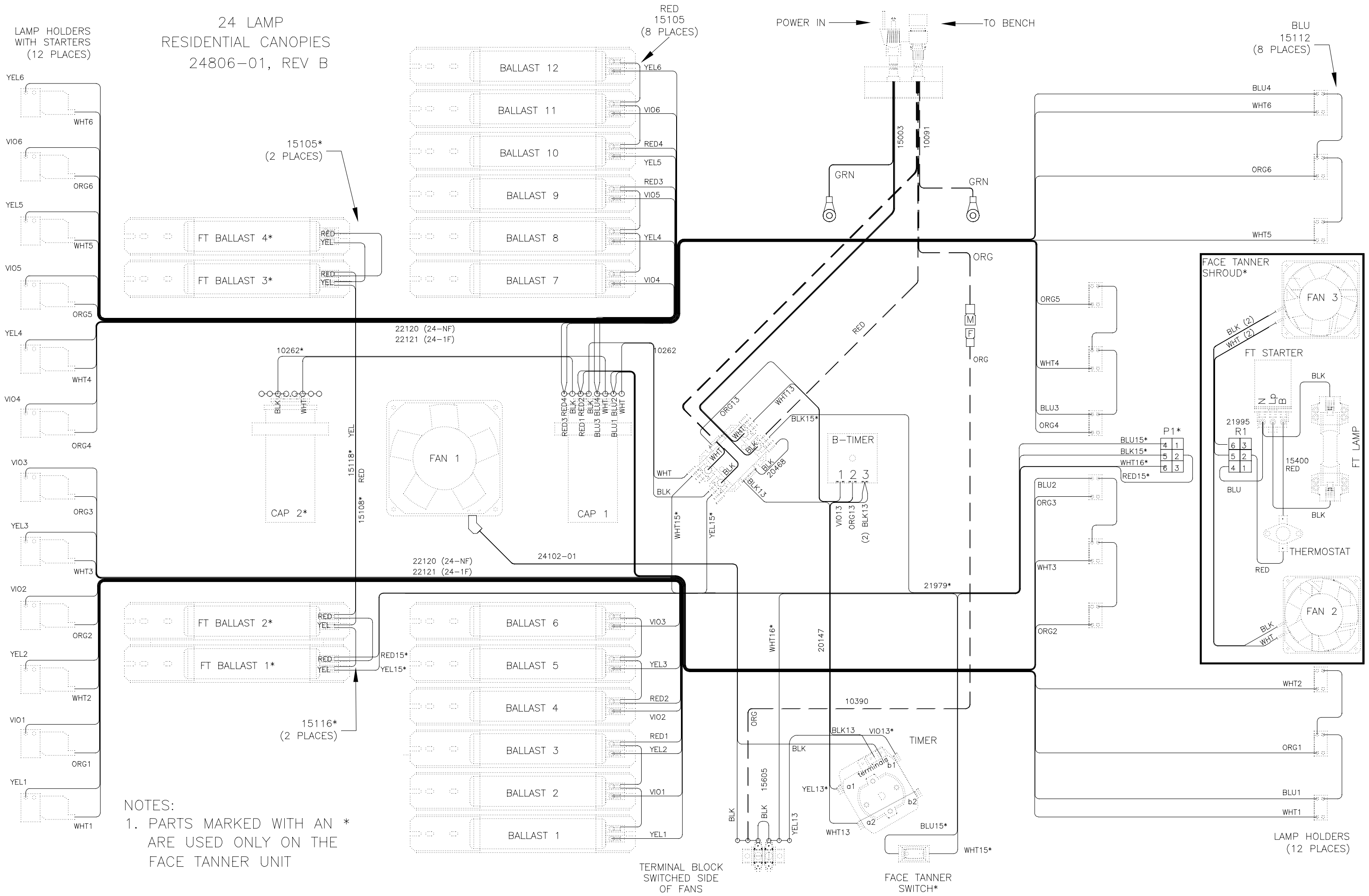


24 LAMP  
RESIDENTIAL CANOPIES  
24806-01, REV B



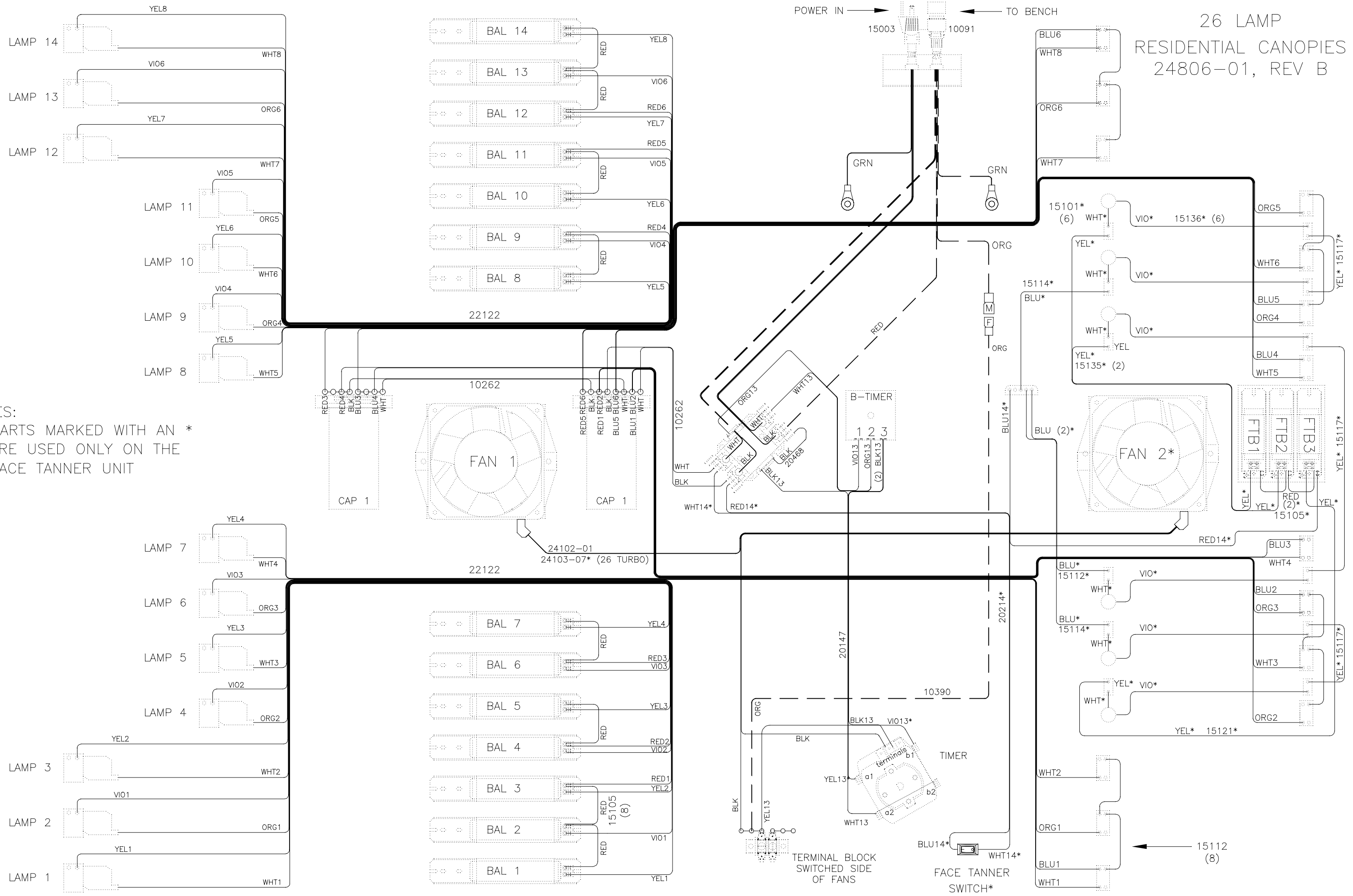
NOTES:  
1. PARTS MARKED WITH AN \*  
ARE USED ONLY ON THE  
FACE TANNER UNIT

TERMINAL BLOCK  
SWITCHED SIDE  
OF FANS

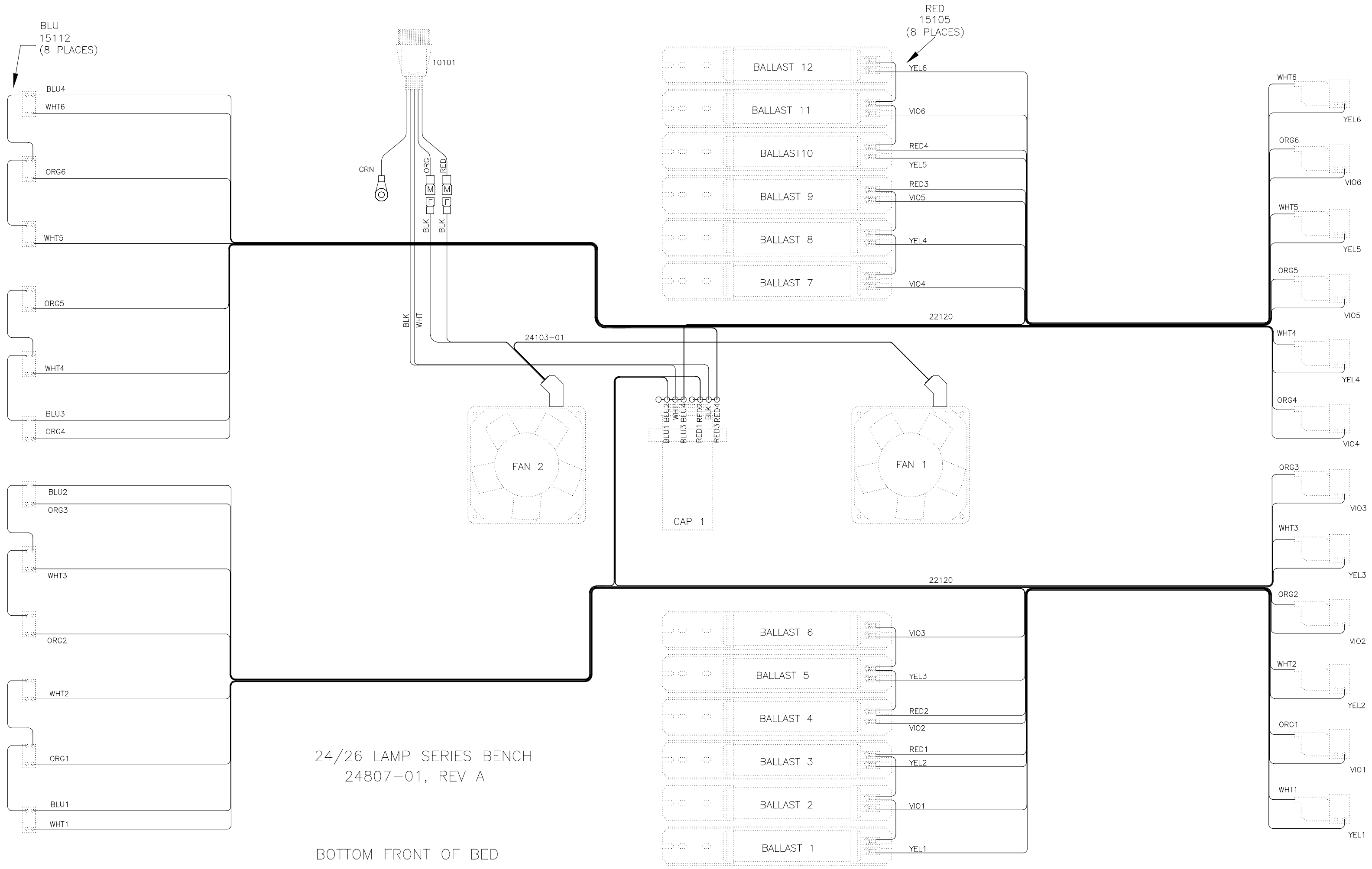
FACE TANNER  
SWITCH\*

LAMP HOLDERS  
(12 PLACES)

26 LAMP  
RESIDENTIAL CANOPIES  
24806-01, REV B



NOTES:  
1. PARTS MARKED WITH AN \*  
ARE USED ONLY ON THE  
FACE TANNER UNIT



BLU  
15112  
(8 PLACES)

RED  
15105  
(8 PLACES)

10101

GRN

BLK

WHT

BLK

BLK

BLK

WHT

24103-01

FAN 2

BLU1  
BLU2  
WHT1  
BLU3  
BLU4  
RED1  
RED2  
BLK1  
RED3  
RED4

CAP 1

FAN 1

22120

22120

24/26 LAMP SERIES BENCH  
24807-01, REV A

BOTTOM FRONT OF BED

BALLAST 12

BALLAST 11

BALLAST10

BALLAST 9

BALLAST 8

BALLAST 7

BALLAST 6

BALLAST 5

BALLAST 4

BALLAST 3

BALLAST 2

BALLAST 1

YEL6

VIO6

RED4

YEL5

RED3

VIO5

YEL4

VIO4

VIO3

YEL3

RED2

VIO2

RED1

YEL2

VIO1

YEL1

WHT6

YEL6

ORG6

VIO6

WHT5

YEL5

ORG5

VIO5

WHT4

YEL4

ORG4

VIO4

ORG3

VIO3

WHT3

YEL3

ORG2

VIO2

WHT2

YEL2

ORG1

VIO1

WHT1

YEL1