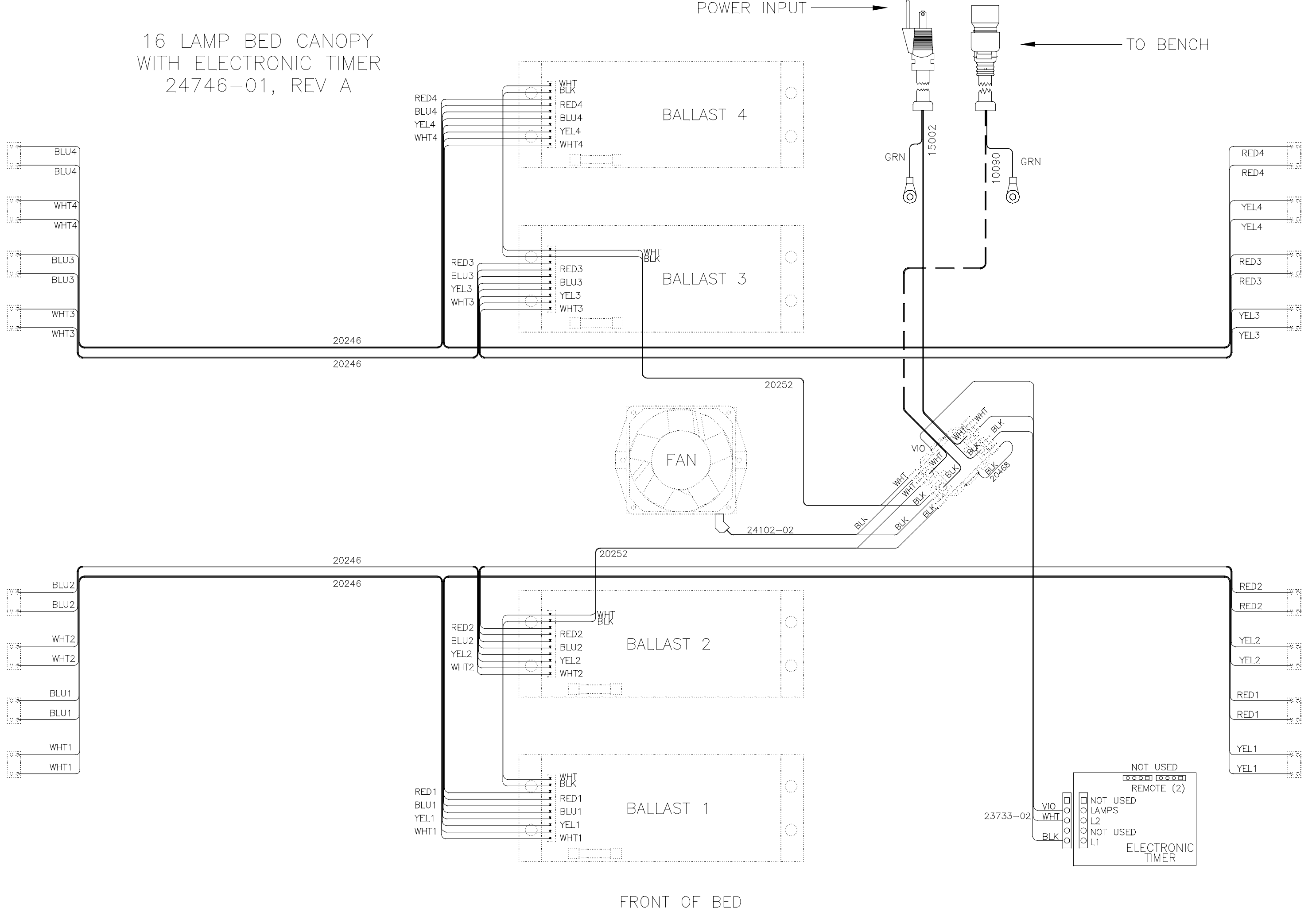


16 LAMP BED CANOPY
WITH ELECTRONIC TIMER
24746-01, REV A



POWER INPUT →

← TO BENCH

FRONT OF BED

RED4
BLU4
YEL4
WHT4

RED3
BLU3
YEL3
WHT3

RED2
BLU2
YEL2
WHT2

RED1
BLU1
YEL1
WHT1

WHT
BLK
RED4
BLU4
YEL4
WHT4

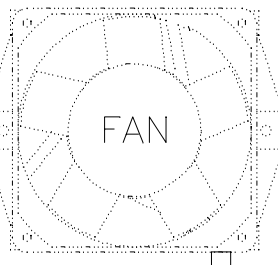
WHT
BLK
RED3
BLU3
YEL3
WHT3

WHT
BLK
RED2
BLU2
YEL2
WHT2

WHT
BLK
RED1
BLU1
YEL1
WHT1

BALLAST 4

BALLAST 3



BALLAST 2

BALLAST 1

GRN

15002

GRN

10090

20246

20246

20252

24102-02

20246

20246

20252

23733-02

VIO

WHT

BLK

NOT USED

REMOTE (2)

NOT USED

LAMPS

L2

NOT USED

L1

ELECTRONIC
TIMER

RED4

RED4

YEL4

YEL4

RED3

RED3

YEL3

YEL3

RED2

RED2

YEL2

YEL2

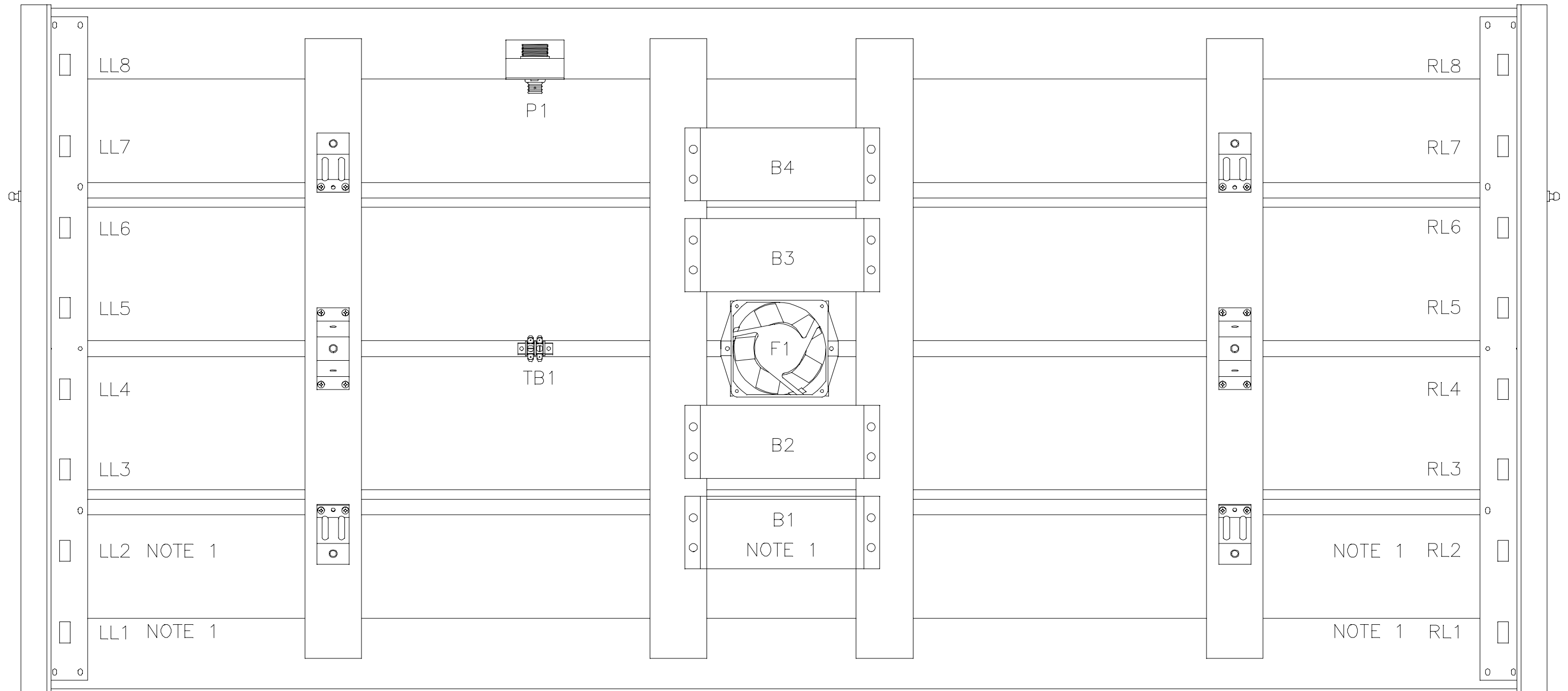
RED1

RED1

YEL1

YEL1

14 & 16 LAMP BENCH COMPONENT LAYOUT



FRONT OF BED

LL = LEFT LAMPHOLDER
 B = BALLAST
 F = FAN

RL = RIGHT LAMPHOLDER
 TB = TERMINAL BLOCK
 P = POWER JACK

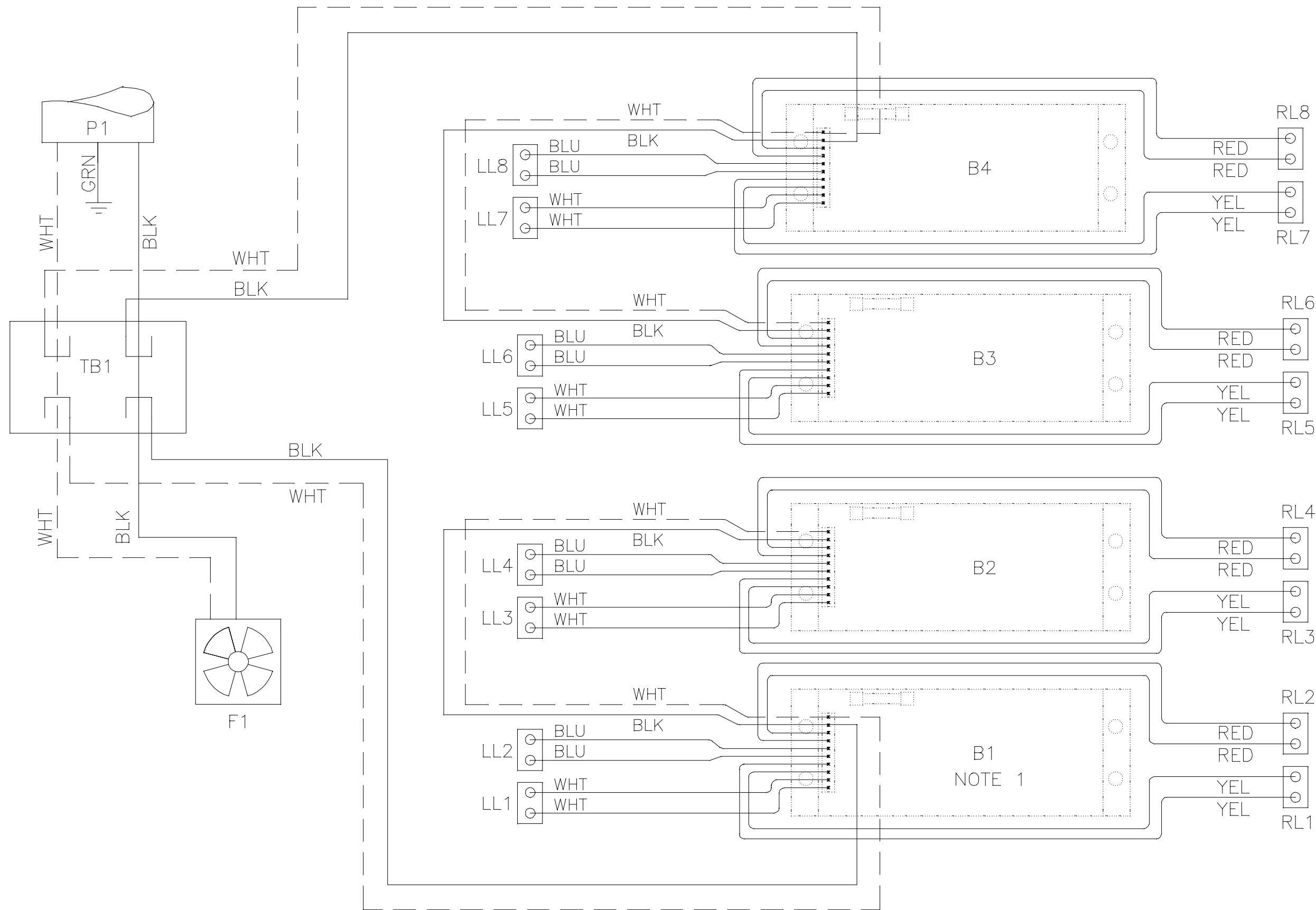
NOTE:

1. ON THE 14 LAMP BED, BALLAST B1 AND LAMPS 1 AND 2 ARE NOT USED.

14 & 16 LAMP BENCH WIRE DIAGRAM

WARNING: ALTERING THE DESIGN, TIMER SYSTEM, OR WIRING FROM THAT SHOWN HEREIN, WILL VOID THE WARRANTY, AND MAY RESULT IN A VIOLATION OF FEDERAL LAW.

24745-01, REV A



LL = LEFT LAMPHOLDER
 B = BALLAST
 F = FAN

RL = RIGHT LAMPHOLDER
 TB = TERMINAL BLOCK
 P = POWER JACK

NOTE:

- ON THE 14 LAMP BENCH, BALLAST B1 AND LAMPS 1 AND 2 ARE NOT USED.

NOTE 1